



PACD is a non-profit 501(c)3 organization that supports, enhances and promotes Pennsylvania's conservation districts and their programs. Districts lead local conservation efforts to sustain, protect and restore the natural resources of the Commonwealth of Pennsylvania.

The guiding principles are:

- Sustainable resource conservation;
- Integrity;
- Local;
- Education and Outreach; and
- Partnerships.

The districts are the "boots on the ground," working everyday with various partners at the local, state and federal levels, implementing environmental projects and programs to preserve their pockets of Pennsylvania.

For more information about conservation districts in your local area, visit www.pacd.org/cd.

For a listing of native plants and trees that make good buffers, visit <http://www.panativeplantsociety.org/>.

Financial and other support for this project is provided by the Pennsylvania Association of Conservation Districts, Inc. through a grant from the Pennsylvania Department of Environmental Protection under Section 319 of the Clean Water Act, administered by the U.S. Environmental Protection Agency.

The Franklin County Conservation District is committed to the improvement and protection of our environment and the wise use of our county's diverse natural resources. The District provides technical assistance to local landowners in order to protect water quality by preventing sediment and nutrient pollution.

District Programs

- Chesapeake Bay Program
- Dirt and Gravel Roads Program
- Environmental Education
- Erosion and Sediment Control Program
- Nutrient Management Program
- Watershed Program



FRANKLIN COUNTY
CONSERVATION DISTRICT

185 Franklin Farm Lane
Chambersburg, PA 17202

717-264-5499
Fax 717-264-5482

www.franklinccd.org

SO YOU HAVE A
STREAM IN
YOUR
BACKYARD...

HERE'S WHAT YOU NEED
TO KNOW...



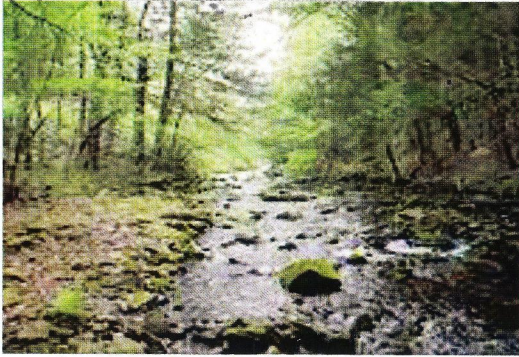
FRANKLIN COUNTY
CONSERVATION DISTRICT

185 Franklin Farm Lane
Chambersburg, PA 17202

717-264-5499
Fax 717-264-5482

www.franklinccd.org

YOUR WELL-BEING DEPENDS ON STREAMS



Healthy Streams

- Provide habitat for fish and wildlife
- Increase property value
- Filter pollutants that can harm fish, wildlife and water quality; and
- Reduce the risk of losing your investment to flooding and erosion.

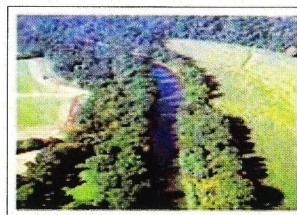
Floodplains

- Ask the question: are there flat areas next to streams?
- Provide a place for water to travel during heavy rain, without adding pressure on the stream itself; and
- Reduce the risk of flooding and erosion downstream.

REMEMBER: STREAMS HAVE NEEDS TOO

Riparian Buffers

- Riparian buffers are strips of land on stream edges maintained in permanent vegetation which helps reduce runoff to streams.
- Plant roots stabilize the bank, slow and absorb excess water, protecting your property from erosion.
- Trees provide shade for the water, keeping temperatures low and benefitting fish such as trout.
- Dense vegetation also filters pollutants before they reach the stream.



Meandering

- It is natural for streams to move.
- Curves in the stream naturally slow down the water, which reduces the potential for erosion.
- A straightened channel is more likely to cause erosion and flooding downstream.

A FEW DO'S AND DON'TS...

- **DO** maintain riparian buffers.
- **DO** build on higher ground, off the floodplain and back from wetlands.
- **DO** minimize excess water by using brick, flagstone or wood for walkways and patios instead of concrete.
- **DO** obtain a permit prior to doing in-stream work like bank stabilization and gravel bar removal.
- **DO** contact your local conservation district for assistance with permitting.
- **DON'T** mow up to the streambank!
- **DON'T** dump trash, pet waste or yard clippings in streams!

